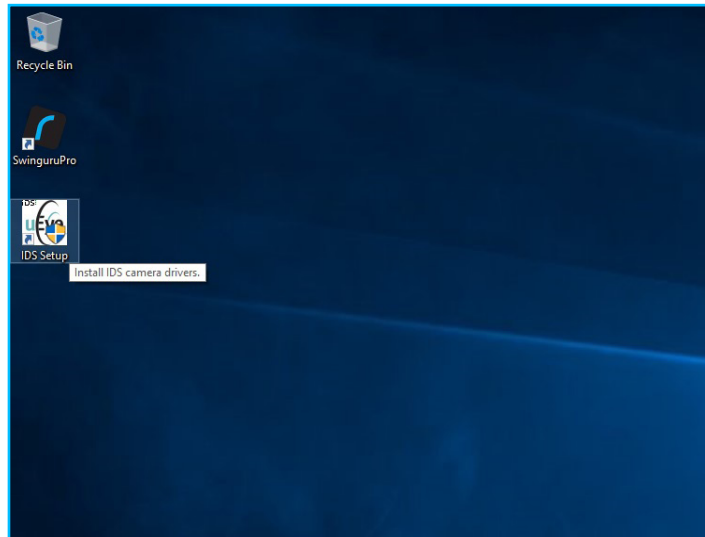
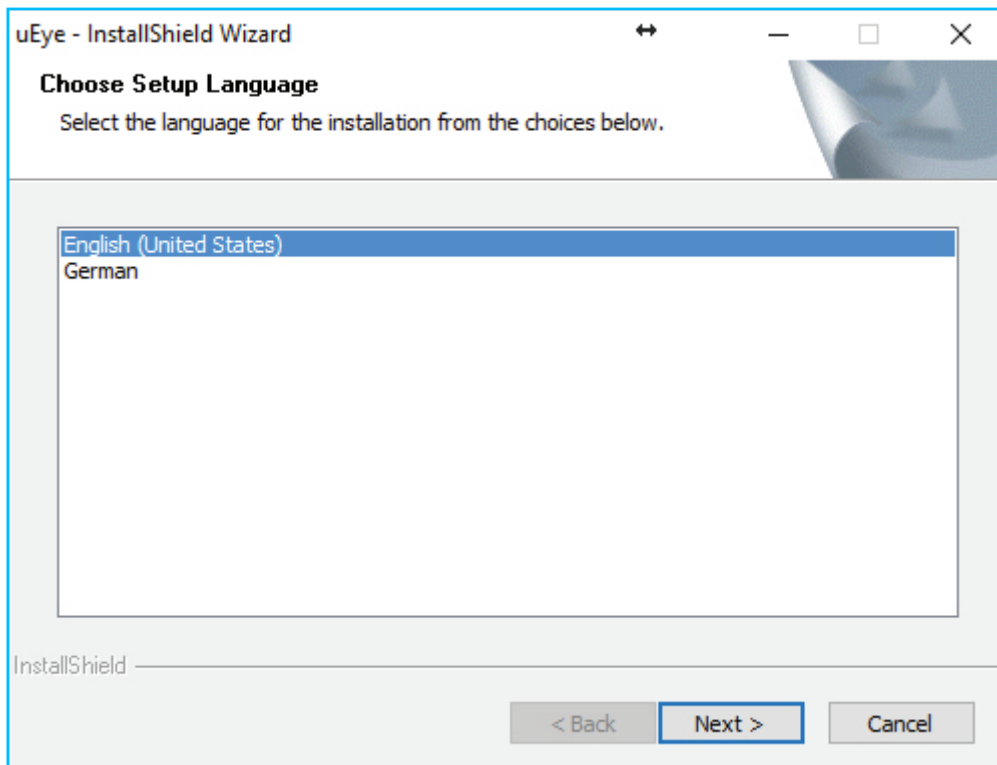


IDS INSTALLATION GUIDE

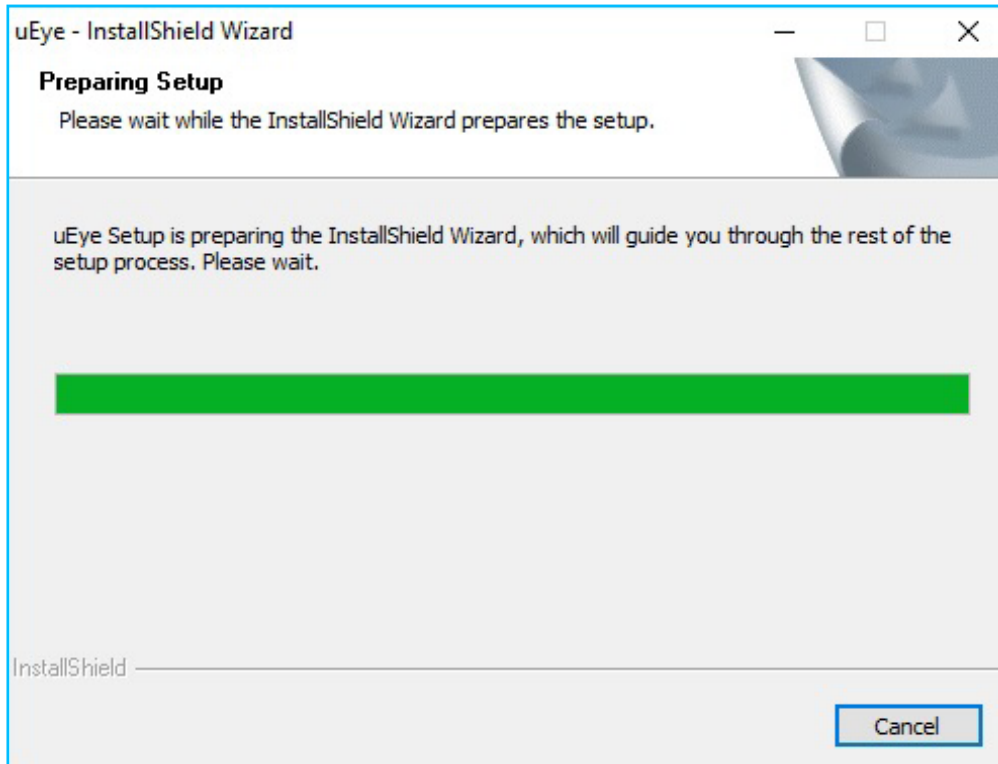
Click the 'IDS setup' icon created on your desktop to install the IDS device drivers



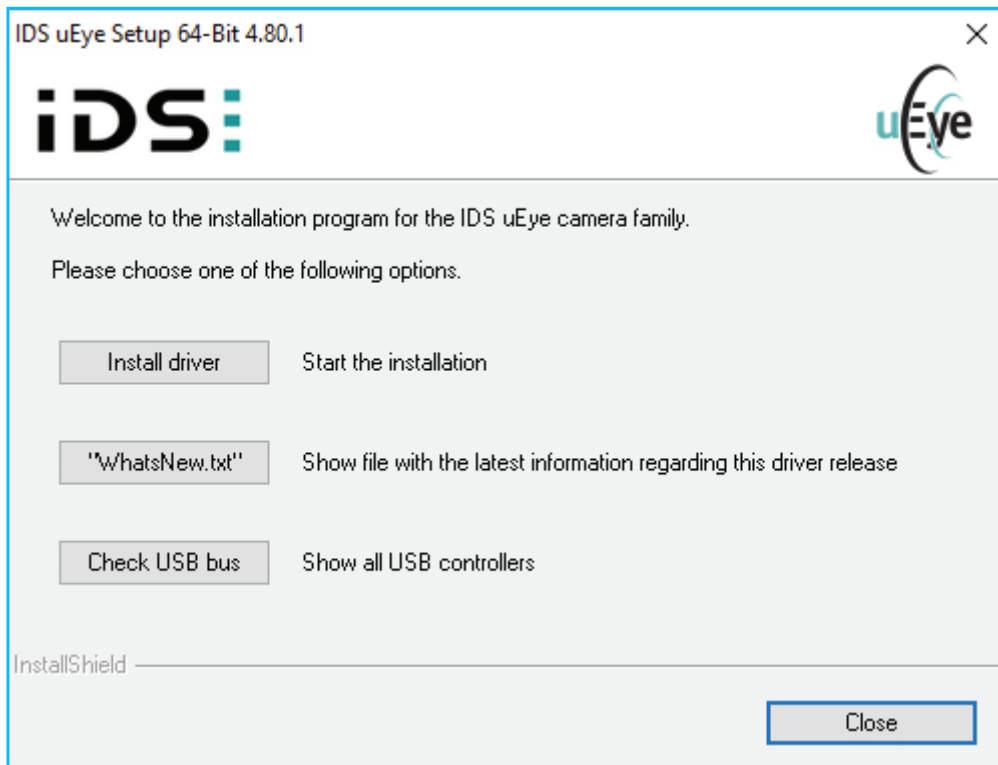
Choose 'English' or 'German' as language and click 'Next'



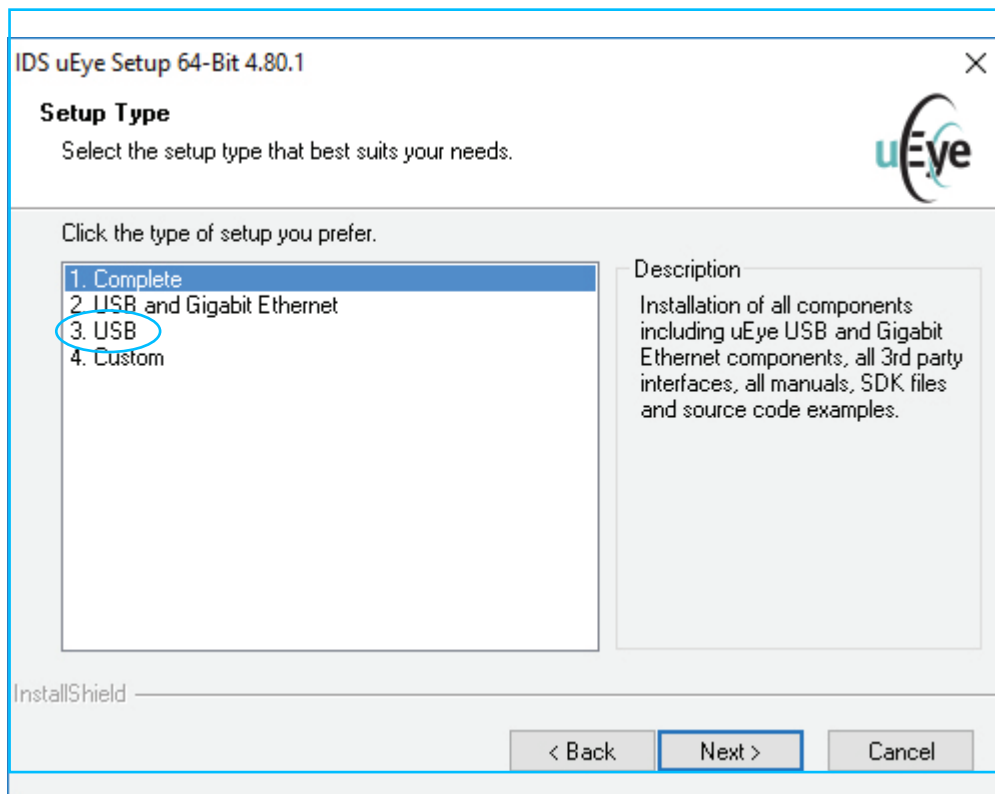
Preparing setup



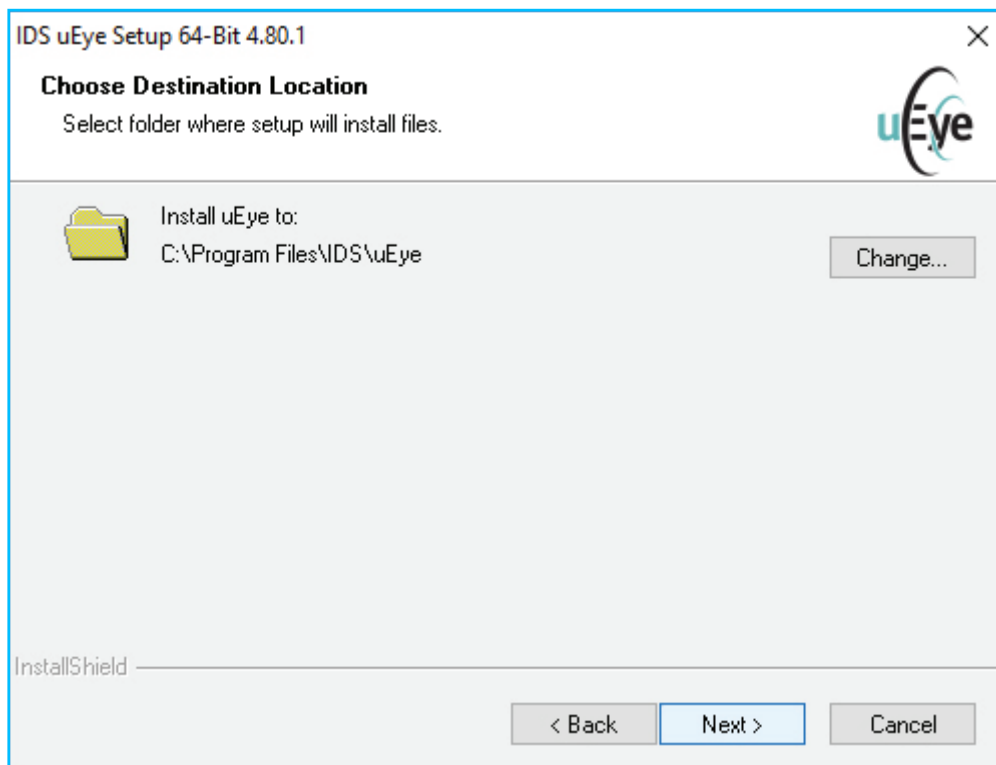
Click 'Install driver' to start the installation



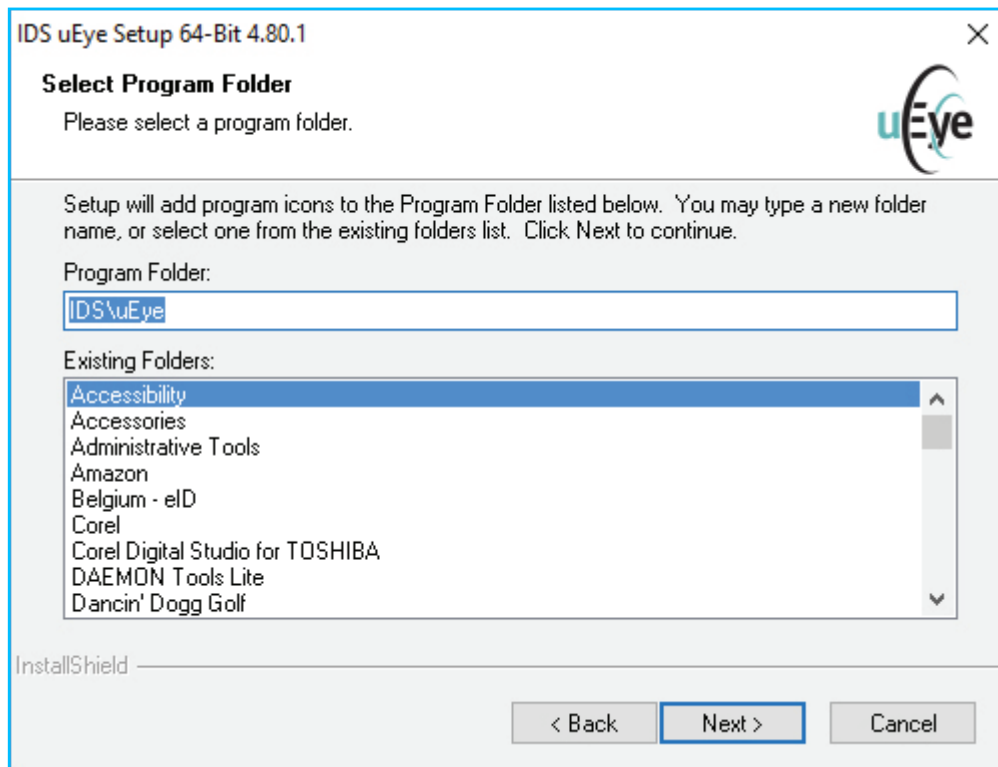
Choose '3. USB' then click 'Next' to continue



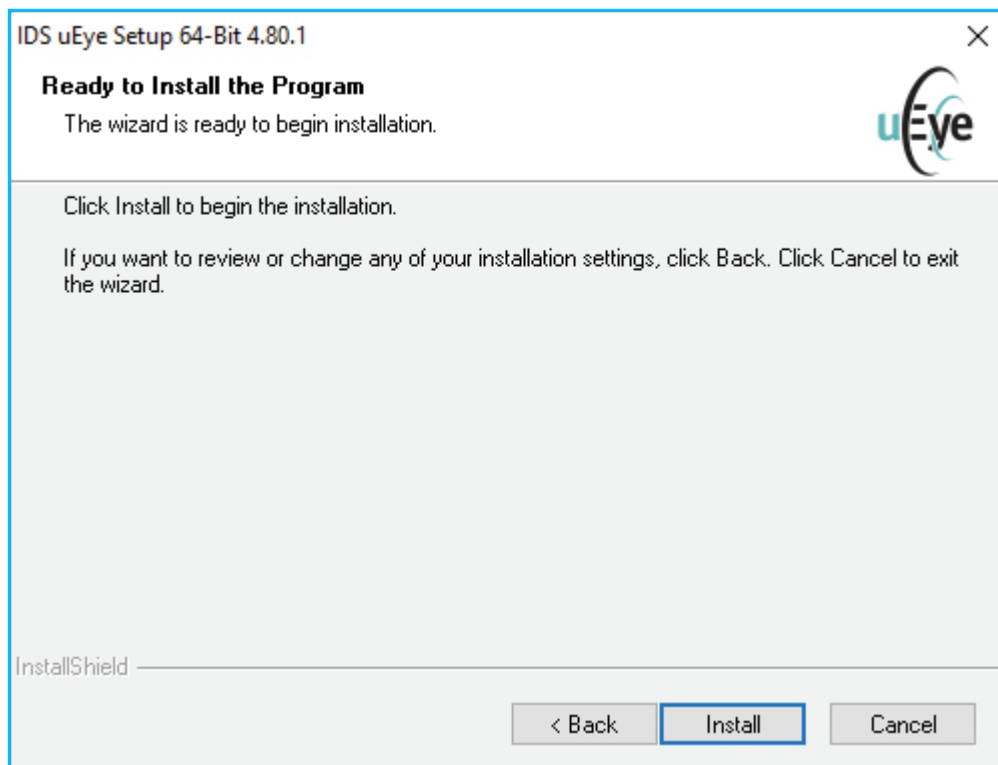
Click 'Next' to continue



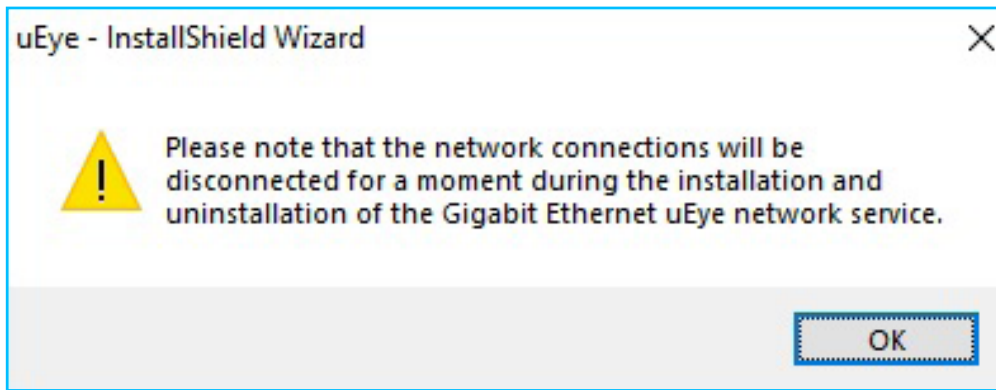
Select Program Folder and click 'Next' to continue



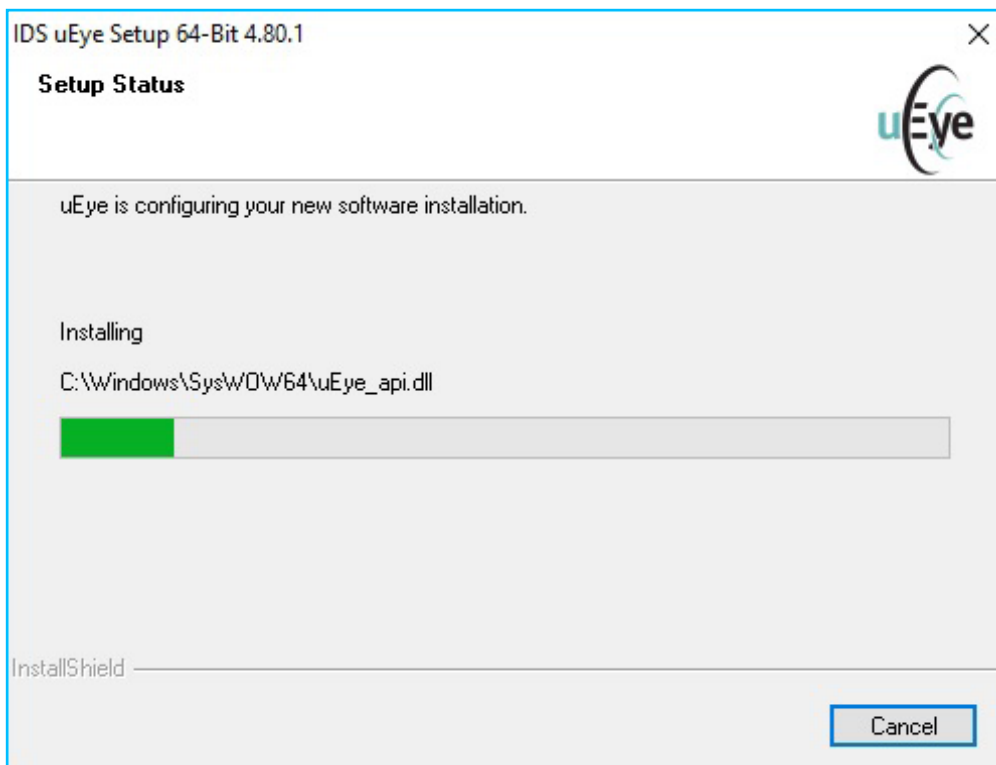
Click 'Install' to continue



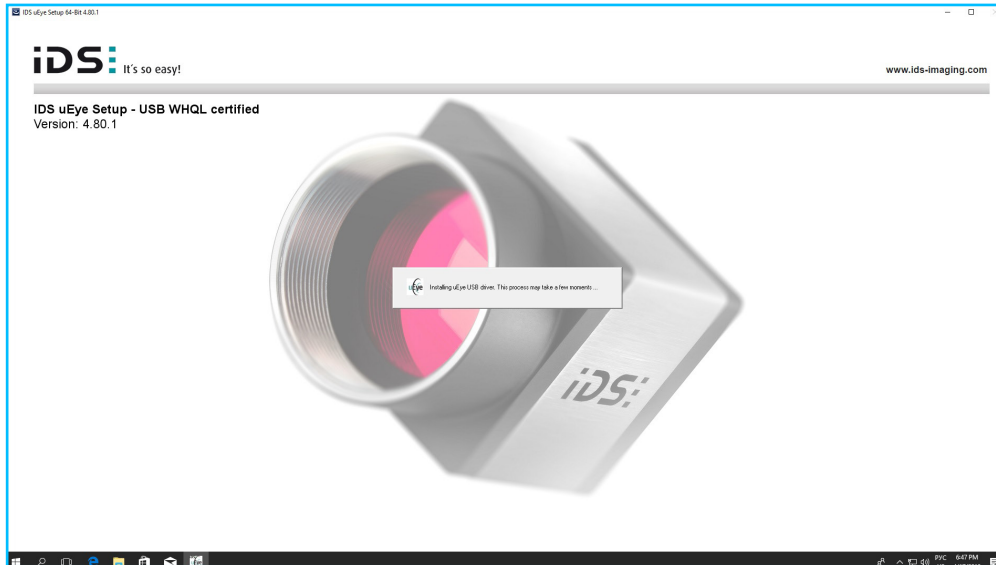
Click 'OK' to allow the network connections to be disconnected for a moment during the installation



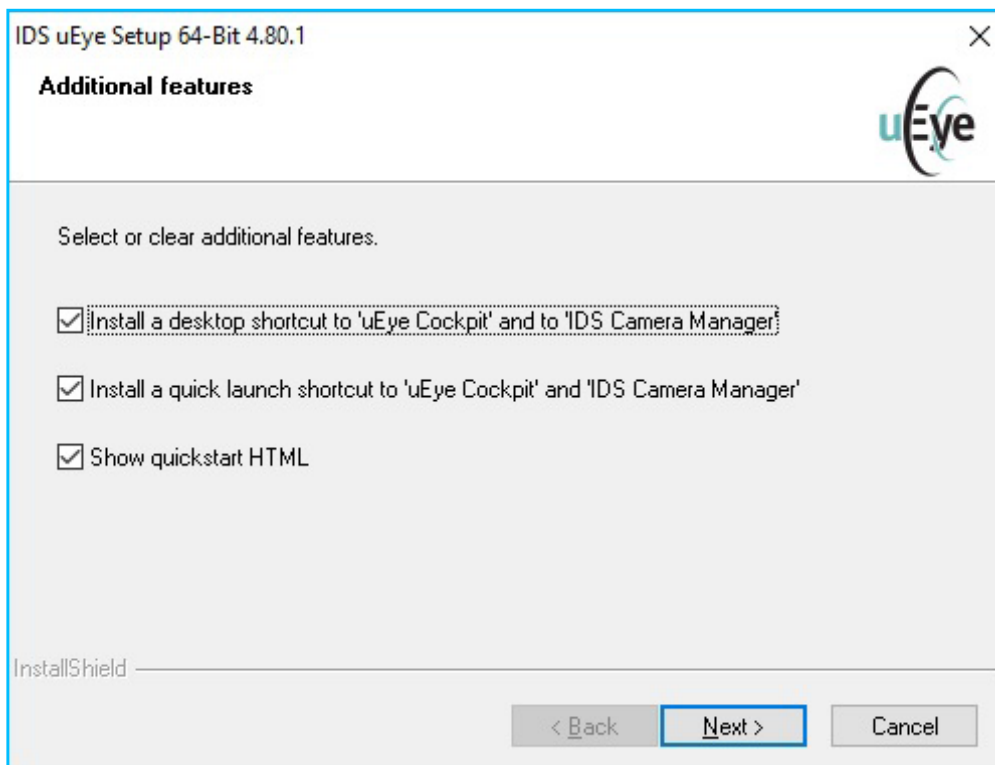
Wait for uEye to configure your software installation



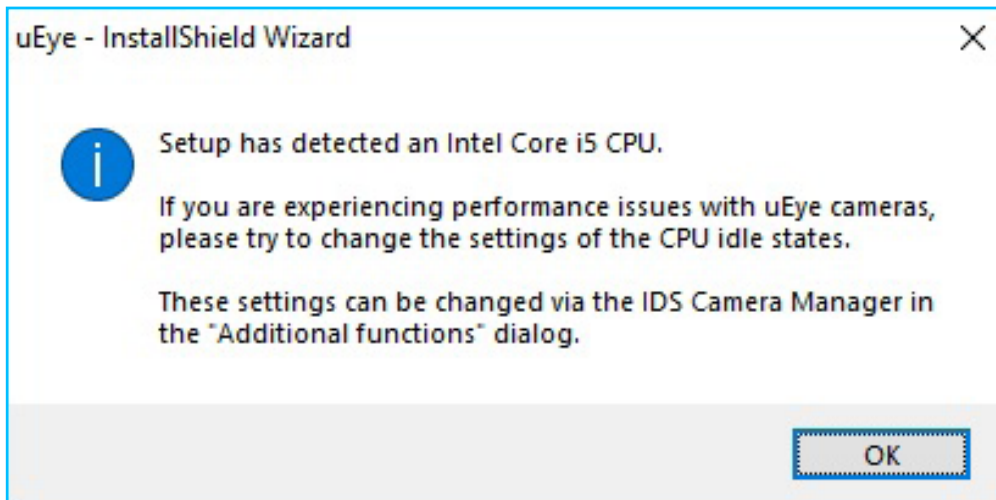
Click 'OK' to allow the network connections to be disconnected for a moment during the installation



Click 'Next' to continue



Click 'OK' and follow instructions in case you experience performance issues and



Click 'Finish' to exit the wizard.

